

PART OF THE NW 1/4, OF SEC. 21, T.7N., R.2W., S.L.B. & M.
ARCHIE HUNT SUBDIVISION

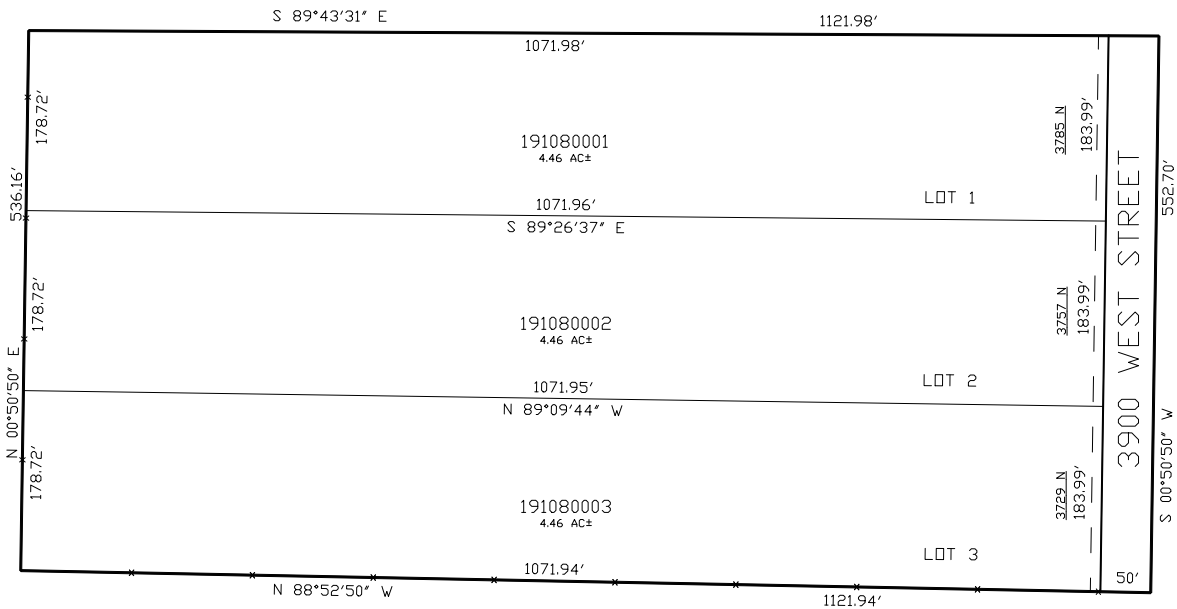
IN WEBER COUNTY
SCALE 1" = 100'

TAXING UNIT: 44

SEE PAGE 9

SEE PAGE 9

SEE PAGE 9



SEE PAGE 9

10' UTILITY & DRAINAGE EASEMENTS EACH
SIDE OF PROPERTY LINES AS INDICATED
BY DASHED LINES EXCEPT AS OTHERWISE
SHOWN.

FOR COMPLETE ENG DATA SEE
ORIGINAL DEDICATION PLAT IN
BOOK 41, PAGE 32 OF RECORDS.